

# Lady Annabella



Eighteenth-century accessories



François Gérard, 1803

81

Fashions of the early nineteenth century were a simplicity of line, for both men and women, with

Jewellery: In her hair she wears a tiara edged with pearls to harmonise



...accessories at a  
Museum costume  
g items which  
ity reproduction  
s and shoes, which  
these difficulties, the  
figures provide a  
manufacturing and  
comparable size.

raw hat fitted  
id- to late 1770s  
kerchief with  
er of the

ith white se  
ed  
l (a later  
nd 1777  
ew such  
amongst  
ngland;  
ntury.  
Ds.

to

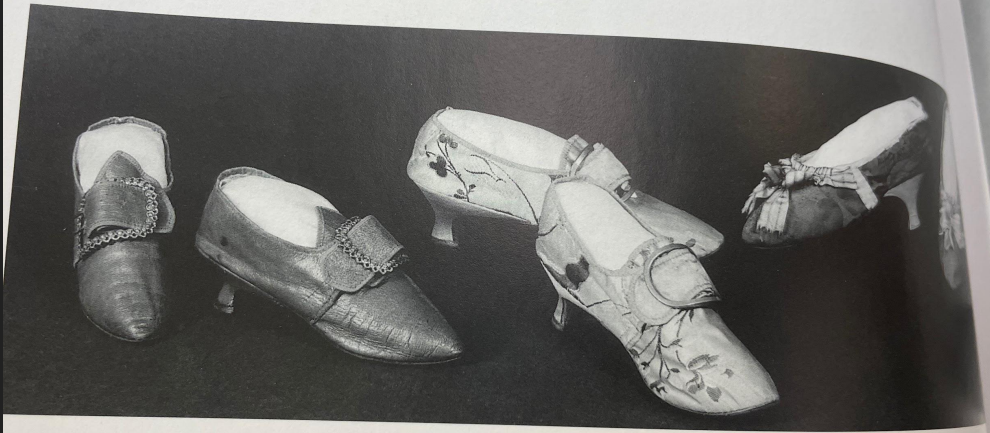


Eighteenth-century accessories

green, yellow and terracotta. The straps  
over the instep and the medium-height tapering heel are  
covered with pale green satin, 1775-85. Right, crimson  
damask bound with blue ribbon. The low fronts,  
without straps, are decorated with ruched striped satin  
ribbon of cream and green. The medium-height,  
tapering heels are covered with white leather, 1770-80.

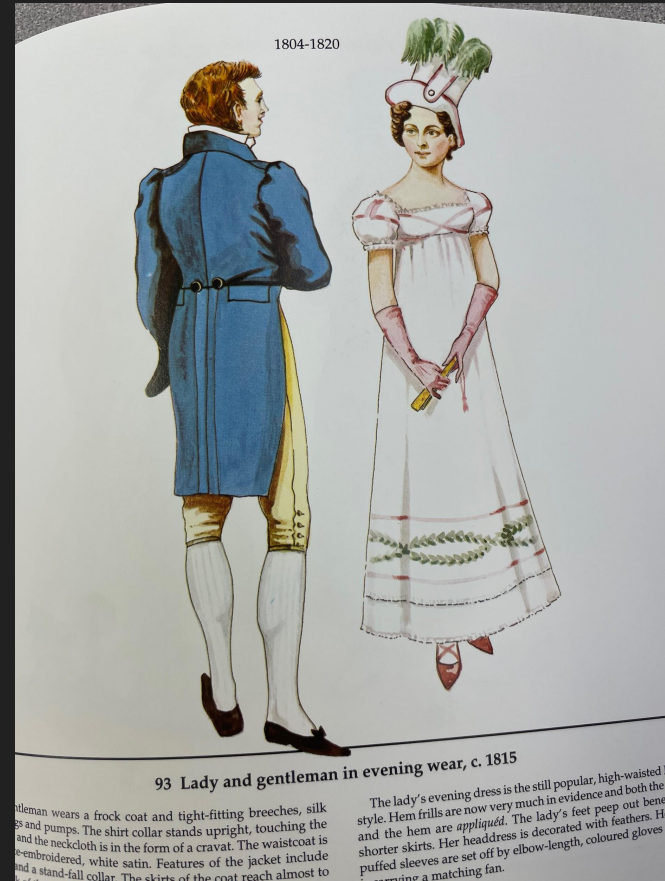
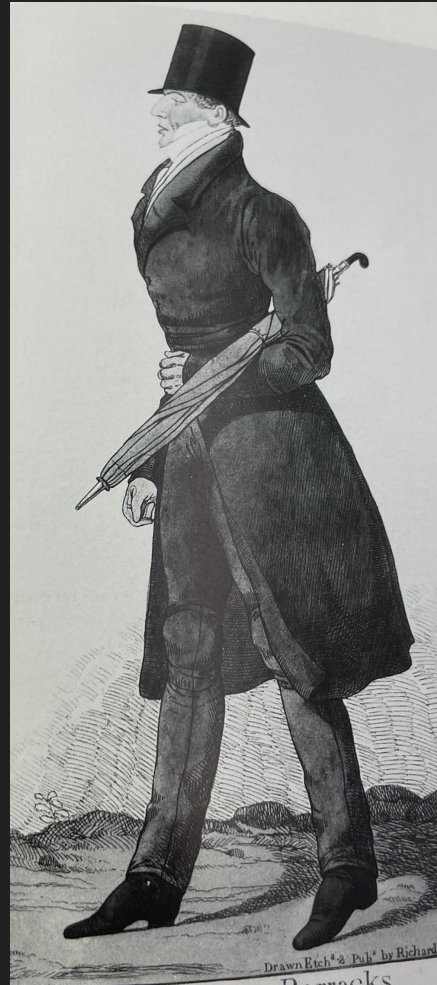
They had also reached America by the early 18th century,  
attracting considerable ridicule.

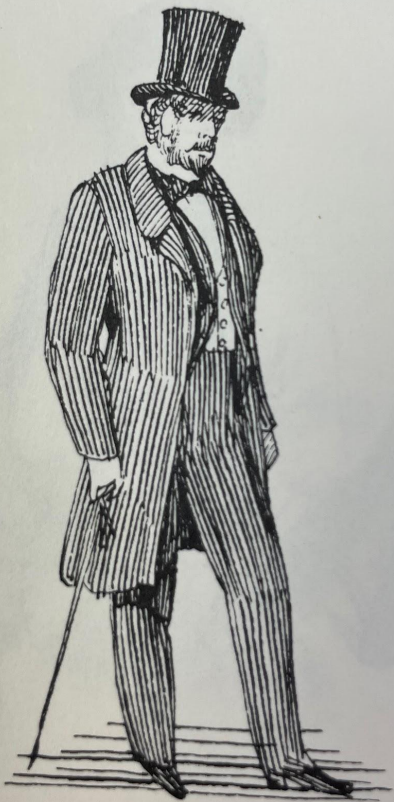
Shoes: These are reproduction but a style similar  
those in Fig. 51 would be appropriate.





# Lord Lovelace





Four



352



Ada



The Empty Purse, James Collinson 1857

1795-1804



83 Lady in riding habit, c. 1795

The riding-coat dress, as the name suggests, was originally designed for riding, but it became very popular as a morning walking-out dress. The close-fitting bodice has pointed revers in front, similar to those on a man's greatcoat, and the neck is encircled by two falling

(neckerchief). The dress has a full skirt to the ground with buttons right down the front. The lower buttons are undone, showing the petticoat. The sleeves are long and fasten at the wrists with buttons.

1804-1820



89 Lady in riding costume, c. 1808

lady's riding habit is still very much in the Directoire style, featuring a *capuchin* collar cut low in front. The small waistcoat has buttons which overlap the collar of the short-waisted jacket. The skirt is long and voluminous, so that when she is walking the lady has to hold it over her arm. She is wearing a lawn shirt with a frilled front

and a masculine full cravat tied in a knot in front. She is wearing a top hat which has replaced the Directoire hat. Her hair is styled in classical ringlets and she has leather gloves.



Three fashionable ladies, after Winterhalter



ten plates







French costumes, c. 1826



108 Family group, c. 1839

as a slightly flared



1820-1840

# Byron



92 Gentlemen in redingote and garrick redingote, c. 1814

man on the left is wearing a double-breasted, knee-length redingote with hip-level, horizontal, flapped side pockets and fairly wide sleeves. It is fastened from the neck to just below the knees with two rows of buttons. The back of the coat has a vent down the centre. He is wearing top boots and a top hat.

The other gentleman is dressed in the all-enveloping, loose-fitting garrick redingote with several collars. It fastens down the front and is fitted with drawstrings and buttons and straps to alter the girth, if required. The turned-up collar or cape can be closed at the throat with a strap and button. The coat has a buttoned-up flap.



1804-1820

small rounded cuffs. The front of the single-breasted jacket, which fastens with only three buttons, is slightly flared at the waist. The vertical gown with a high neck and a decorative border at the hem is fastened with a slightly

# Charles Babbage





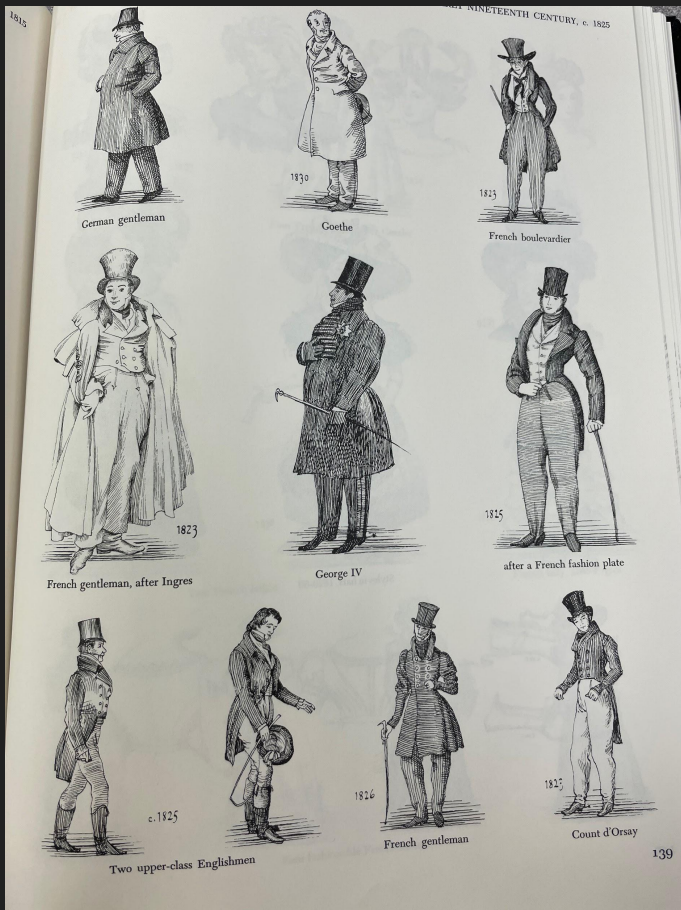
Four g



50

c.1850

gentleman



1815



German gentleman



Goethe



French boulevardier



French gentleman, after Ingres



George IV



after a French fashion plate



Two upper-class Englishmen



c.1825



1826

French gentleman



Count d'Orsay

# Mary Somerville



109 Ladies and young girl, c. 1840

The lady has on a summer morning round gown. The long-waisted bodice is draped with folds to form a V-shape to the waist. The neckline is half-high and has a ruching decoration. The sleeves have

In the background is a lady with a close-fitting waistcoat buttoning down the front and reversible chemisette, pleated and laced. The skirt is sepia. The little girl is wearing a close-fitting, full skirt. Her shoes are



111 Lady and gentleman in autumn costumes, c. 1842

This lady

She is wearing a bonnet decorated with a point. She is wearing a Chesterfield paletot. It is



112 Indoor and outdoor costumes, c. 1850



Ladies in crinolines, c. 1855 with young girl, c. 1852

wearing a jacket bodice which the neck is closed with a lace *engageantes*. Her skirt is wide and full, with a *battolet* far back on her head.

open sleeves have *engageantes*. The skirt is very full with *engageantes*. The cap sits on the back of the head. The little girl wears a tight-fitting bodice with a chemise underneath.



113 Lady in day dress with boy, c. 1846

dress worn by this lady is a *battolet*. Her hair is parted in the centre with a *battolet*. The young boy wears a blue jacket with a white collar and a red bow tie. His pants are checkered. The lady's short jacket has a narrow collar and a white lace trim.

EARLY NINETEENTH CENTURY. c. 1805



Hairdos and hats. 1800-10



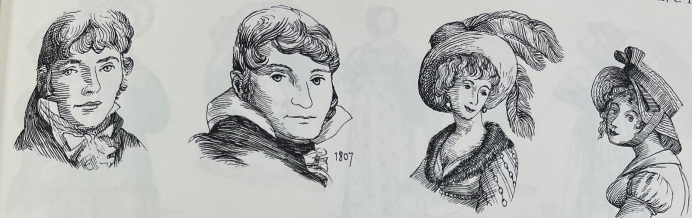
Spencer

Shoes

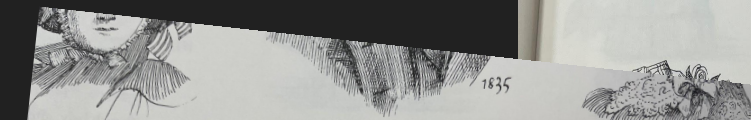
Muslin chemisette



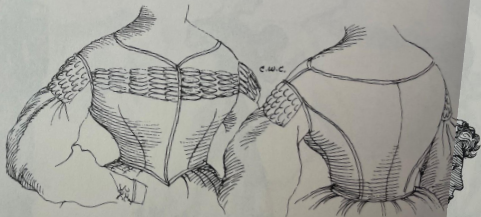
Lighton and Back for 3/6, Charles Rossiter, 1859



1835



Women's shoes



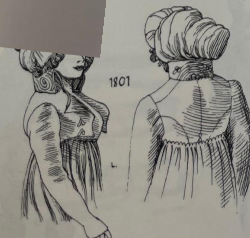
Bodice, front and back



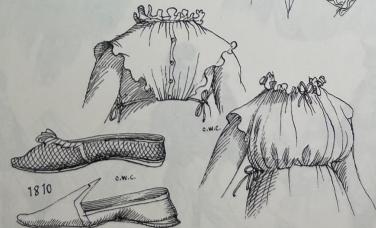
Hairdos and hats, 1800-10



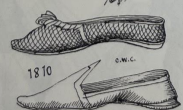
1801



Spencer



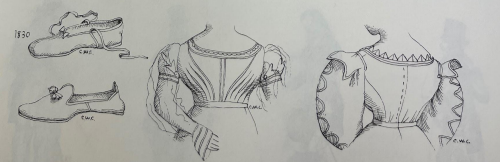
Muslin chemisette



Shoes



Styles in hats, 1820-30







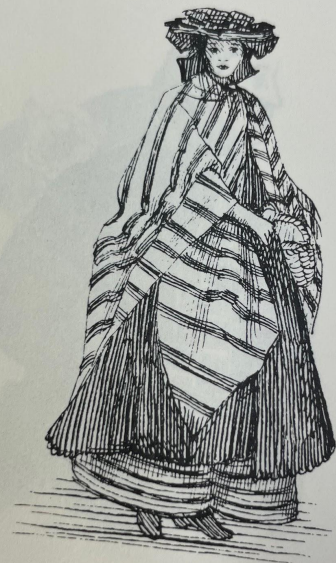
*The Duchess of Kent. The Queen. Prince Albert.*  
*The Latest & Newest London & Paris Fashions 1832 Morning & Evening Dresses.*



*Newest Fashions for January 1832 Morning and Evening Dresses.*



EUROPEAN COSTUME



English woman



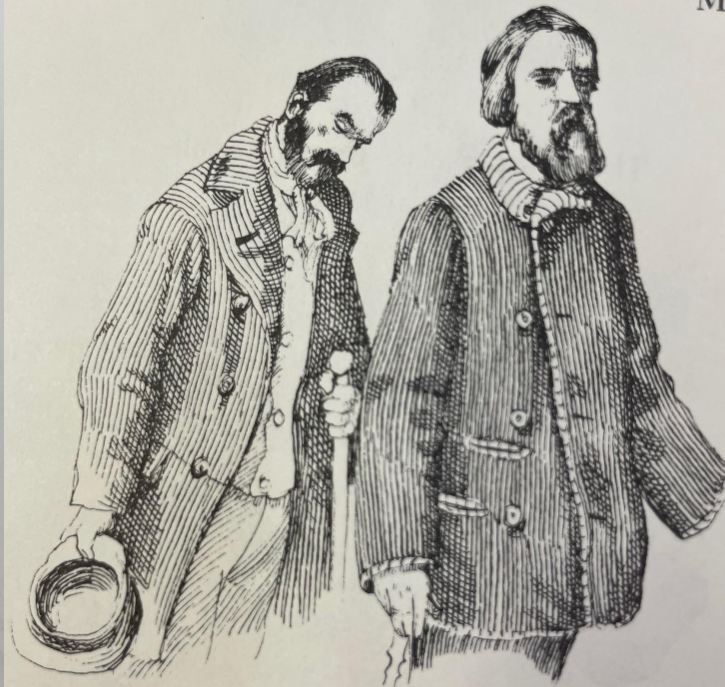
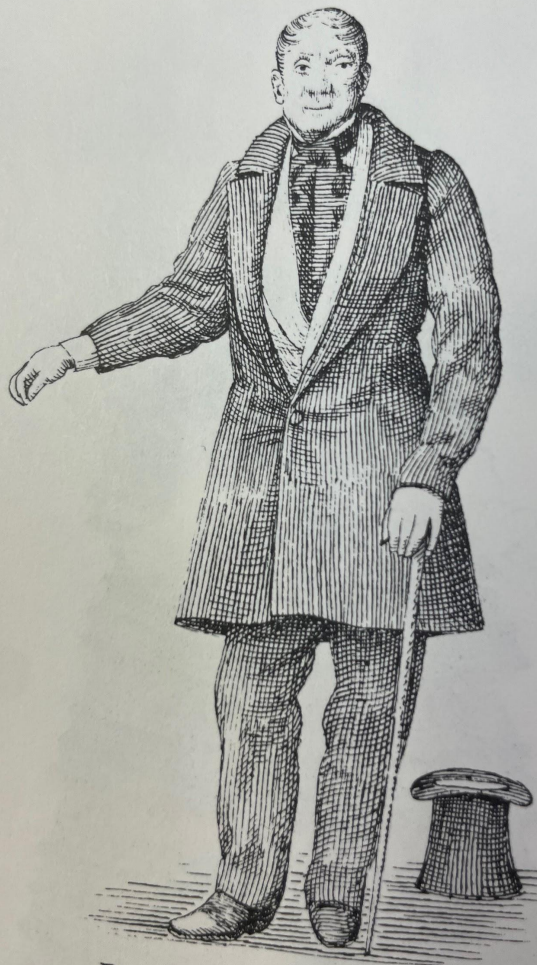
1858

Upper-class Austrians



c.1860

gentleman and lady



ree French gentlemen



Countess de Castiglione

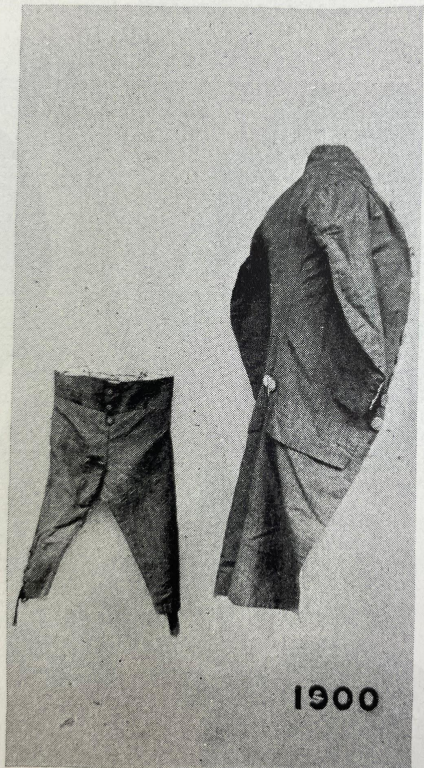


c.1860

French lady



1899



1900



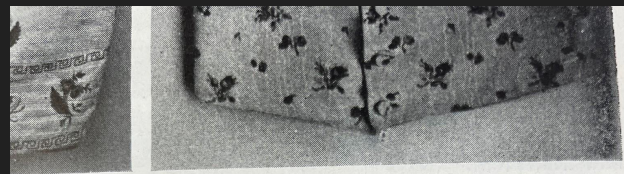
1874-92. French.  
Embroidery detail.

1785-1805. Italian, Venice.

Waistcoat: figured moiré

1899. XIXc. English.

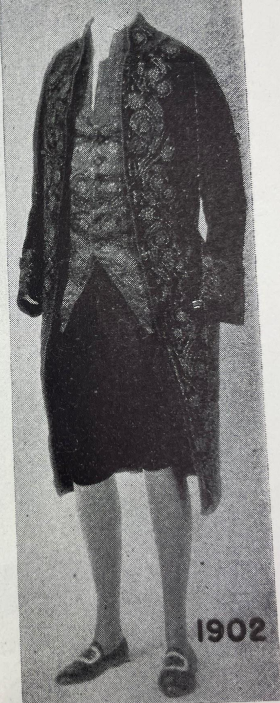
Waistcoat: shawl collar



1899



1901

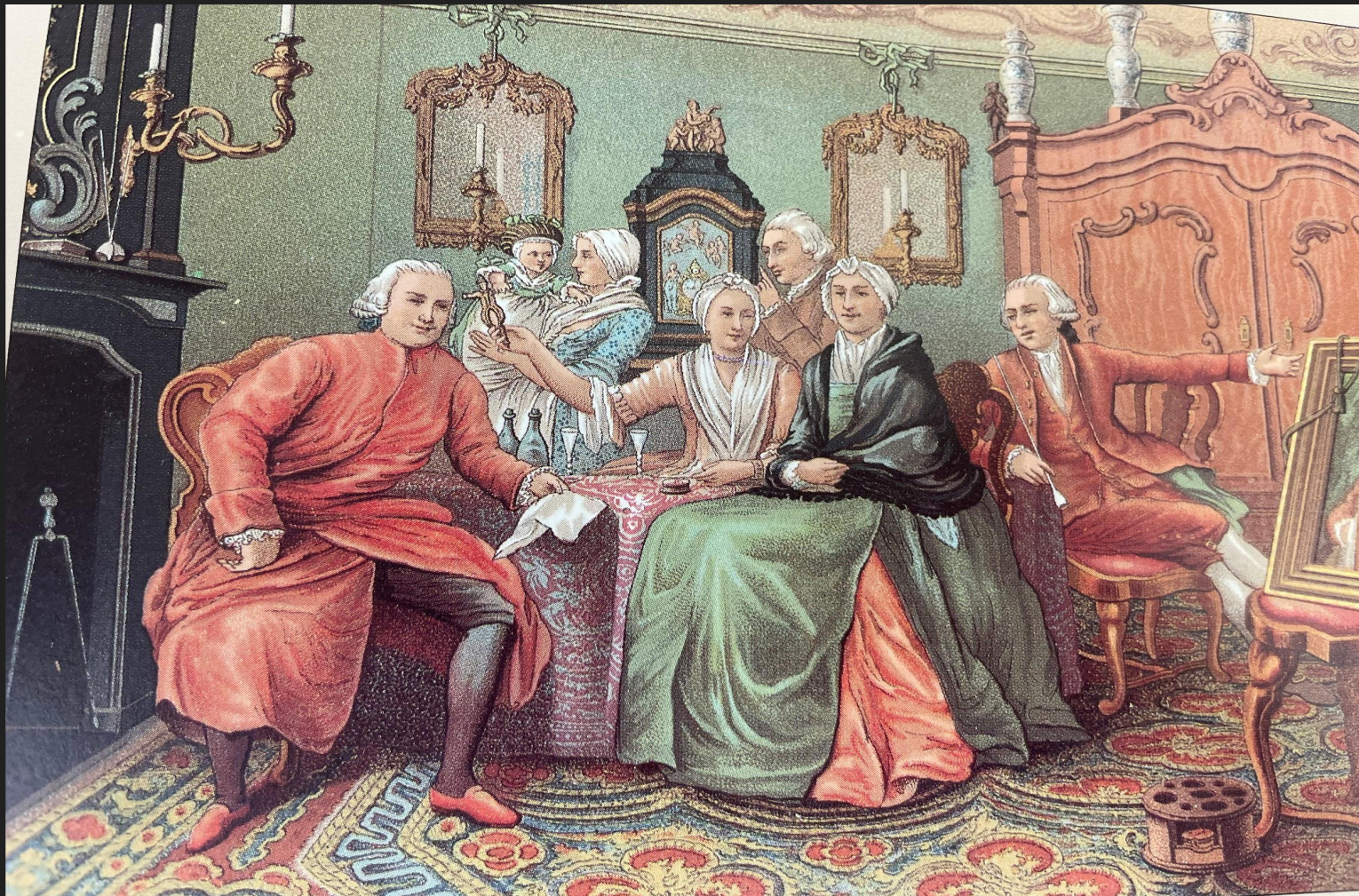


1902

Waistcoat: figured moiré.

1899. XIXc. English.

Waistcoat: shawl collar; plum brocade, embroi-



# Citations

The Historical Encyclopedia of Costumes, Albert Racinet (Book)

The Book of Costumes, Davenport (Book)

What People Wore, Douglas Gorsline (Book)

Costume & Fashion, Jack Cassin-Scott (Book)

The Visual History of Costume Accessories, Valerie Cummings (Book)